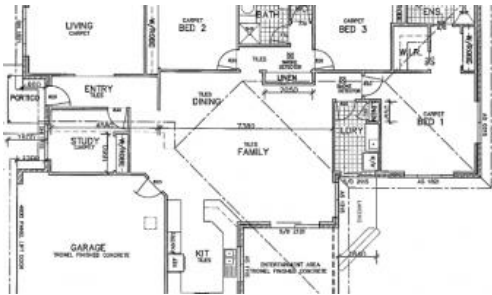


Sold



16 Kyla Crescent, Port Macquarie



## Contemporary Masterpiece

Modern and stylish four bedroom home with quality inclusions throughout. Features superb main bedroom suite with walk-in wardrobe and ensuite. Open plan family room and dining area which adjoins kitchen with breakfast bar. Double garage with internal access and electric (remote) panel lift door. Inclusions: ducted vacuum system, ceiling fans, dishwasher, ducted range hood and plenty more. Complete and ready to move into including paths, driveway, colour bond fences and turf landscaping. A brand new design by Seaside Building. Council Rates \$1,750 pa (approximately).

*The above information provided has been furnished to us by the vendor/s. We have not verified whether or not that information is accurate and do not have any belief in one way or the other in its accuracy. We do not accept any responsibility to any person for its accuracy and do no more than pass it on. All interested parties should make and rely upon their own inquiries in order to determine whether or not this information is in fact accurate.*

🛏️ 4 🚿 2 🚗 2 📏 603 m2

<b>Price</b>	SOLD
<b>Property Type</b>	Residential
<b>Property ID</b>	1301
<b>Land Area</b>	603 m2
<b>Floor Area</b>	242 m2

### Agent Details

Keith Cramp - 0418 633 098

### Office Details

Lake Cathie Bonny Hills Real Estate  
SHOP 6 1609 Ocean Dr Lake Cathie  
NSW 2445 Australia  
02 6585 5777

