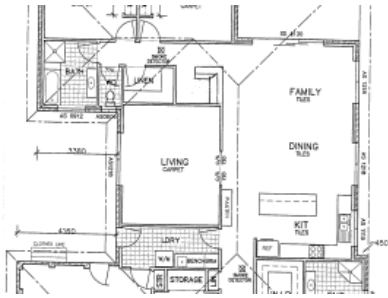


Sold



26 Kyla Crescent, Port Macquarie



## Designed To Make An Impression

Impressive design fabulous for the family offering four bedrooms, ensuite to main bedroom, open plan tiled family room, dining/kitchen area with stylish island bench including breakfast bar facility. Double garage with internal access and electric (remote) panel lift door. Inclusions like ducted vacuum system, clothesline, ceiling fans, dishwasher and ducted range hood. Totally complete and ready to move into including paths, driveway, colour bond fences and turf landscaping. View now and be part of new home living. Council Rates \$1,980pa (approximately).

*The above information provided has been furnished to us by the vendor/s. We have not verified whether or not that information is accurate and do not have any belief in one way or the other in its accuracy. We do not accept any responsibility to any person for its accuracy and do no more than pass it on. All interested parties should make and rely upon their own inquiries in order to determine whether or not this information is in fact accurate.*

🛏 4 🚿 2 🚿 2 📏 629 m2

<b>Price</b>	SOLD
<b>Property Type</b>	Residential
<b>Property ID</b>	1352
<b>Land Area</b>	629 m2
<b>Floor Area</b>	242 m2

### Agent Details

Keith Cramp - 0418 633 098

### Office Details

Lake Cathie Bonny Hills Real Estate  
SHOP 6 1609 Ocean Dr Lake Cathie  
NSW 2445 Australia  
02 6585 5777

