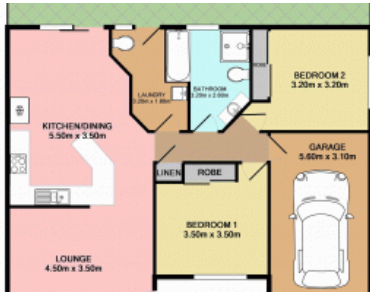




2, 4 Sheriff Way, Port Macquarie



Seeing Is Believing

If you are looking for a superb villa with recent classical refinements providing quality fixtures and flair, then this is the one! Situated in the middle of a small block of three, this home offers privacy and serenity. On offer are two large bedrooms, a designer kitchen/living area, a comfortable lounge, modern bathroom with extra toilet, single garage and a lovely sundrenched courtyard. The interior is very easy care with tiles throughout, except for the bedrooms. The location is second to none - approximately seven minutes to the CBD, close to the Base Hospital, Coles and St Columba School. If it's location, value or investment you desire, call and book your inspection today. This one ticks all the boxes, the question is.....will it tick yours? Council Rates \$1,850pa. Strata Levies \$341.66pq.

The above information provided has been furnished to us by the vendor/s. We have not verified whether or not that information is accurate and do not have any belief in one way or the other in its accuracy. We do not accept any responsibility to any person for its accuracy and do no more than pass it on. All interested parties should make and rely upon their own inquiries in order to determine whether or not this information is in fact accurate.

🛏 2 🚿 1 🚗 1

Price	SOLD
Property Type	Residential
Property ID	1439
Land Area	0 m2

Agent Details
Keith Cramp - 0418 633 098

Office Details
Lake Cathie Bonny Hills Real Estate
SHOP 6 1609 Ocean Dr Lake Cathie
NSW 2445 Australia
02 6585 5777

